

2024 **IMPACT** REPORT



STRAIGHT TO THE **HEART.**




The Foundation

of the Pennsylvania Medical Society

The mission of The Foundation of the Pennsylvania Medical Society is to provide programs and services for individual physicians and others that improve the well-being of Pennsylvanians and sustain the future of medicine.



TABLE OF CONTENTS



Board of Trustees	4
Message from the Chair	5
Executive Director Report	6
Peer Assistance Monitoring Programs	7
Student Financial Services	11
LifeGuard® Program	18
Financials	20
Distinguished Lifetime Fellows	21
Hospital Support	22
Donors	24
Committees & Staff	40



BOARD OF TRUSTEES

The Foundation of the Pennsylvania Medical Society thanks the members of our Board of Trustees for their gracious leadership, thoughtful insight and unwavering dedication to our mission.

Virginia E. Hall, MD, FACOG, FACP – *Chair*

Paul F. Dende, DO, FACP – *Vice Chair*

William J. West Jr., MD – *Treasurer*

Sarah Al-Obaydi, MD, MPH

Kenneth M. Certa, MD

William R. Dewar III, MD, FACP

Lawrence R. John, MD

Daniel B. Kimball Jr., MD, MACP

Martin P. Raniowski, MA, FCPP, CAE

PAMED CEO and Executive Vice President

Donna Bayer Rovito

Lynda Thomas-Mabine, MD, FACOG

Stacie Kerbel – *Medical Student Trustee*

Ara Khoylyan – *Medical Student Trustee – Elect*



MESSAGE FROM THE BOARD CHAIR



At The Foundation of the Pennsylvania Medical Society, a diverse and generous group of donors fuel our mission to serve physicians and health care professionals. The year 2024 was a period of exceptional growth for The Foundation. We were proud to introduce the **Trudell Medical Excellence Scholarship**, expanding our scholarship programs and awarding a total of **\$149,300** to medical students to ease the burden of their education costs.

Guided by our belief that every patient deserves care from a team that is mentally, emotionally, and physically healthy, we achieved significant milestones. On January 1, 2024, The Foundation expanded its Peer Assistance Monitoring Services and launched the **Nurses' Health Program**, supporting approximately 500 nursing professionals. Together with the addition of pharmacists in 2023, the inclusion of nursing professionals **tripled the number of individuals served** in our Peer Assistance Monitoring Programs. With humility and gratitude, we acknowledge our Advisory Committee members who represent the licensees we serve. Their expertise is the foundation of our programs and processes, allowing us to act as a trusted and confidential resource for health care professionals and trainees dealing with substance use disorders, mental health challenges, and behavioral concerns.

Our unwavering commitment to the well-being of all health care team members inspired efforts to reduce stigma and normalize seeking help in 2024. We recognize that support and care from those around us are vital for everyone. This work is made possible by our dedicated volunteer board of trustees, advisory committees, staff, and trustees—individuals who lead with thoughtfulness, compassion, and generosity. To our donors, I extend heartfelt gratitude. **Your philanthropic contributions save careers, change lives, and ensure a vibrant future for Pennsylvania's medical community.**

Thank you for being part of this transformative journey. Together, we make a lasting impact.

A handwritten signature in cursive script that reads "Virginia E. Hall MD".

Virginia E. Hall, MD, FACOG, FACP

Chair, The Foundation of the Pennsylvania Medical Society



MESSAGE FROM THE EXECUTIVE DIRECTOR



The **2024 Annual Impact Report** highlights a year of exceptional growth and programmatic expansion, as we continued to support physicians and other safety-sensitive professionals within the health care community. This past year, The Foundation strengthened the heart of our medical communities by:

- **Expanding Peer Assistance Monitoring Programs.** We extended our services to include individuals licensed under the Commonwealth's Board of Nursing, achieving our strategic plan goal of supporting a healthy and safety-sensitive workforce through peer monitoring.
- **Advancing Medical Education Access.** Over \$149,000 in scholarship awards were distributed to medical students, reinforcing our mission to make the dream of becoming a doctor more accessible for all.
- **Reducing Mental Health Stigma.** We successfully advocated for changes in licensing questions, aligning with the Wellbeing First Champion movement of the Dr. Lorna Breen Heroes' Foundation to eliminate intrusive mental health queries and reduce stigma.
- **Enhancing Clinical Competency Assessments.** The LifeGuard® program achieved a proposal acceptance rate of 88%, a programmatic high. Our expert staff and faculty delivered confidential and unbiased clinical competency assessments, ensuring quality of care, fitness for duty, and practice monitoring.

Every dollar donated to The Foundation of the Pennsylvania Medical Society embodies kindness, gratitude, and strength. Our mission thrives because of the generous support we receive from the Pennsylvania Medical Society, hospitals (including medical staff leadership and administration), county and specialty societies, as well as corporate and individual donors. Your contributions demonstrate an unwavering commitment to the medical community, ensuring that the auscultations of The Foundation remain strong. With profound gratitude and appreciation, I extend heartfelt thanks.

A handwritten signature in black ink that reads "Heather A. Wilson". The signature is fluid and cursive, with the first name being the most prominent.

Heather A. Wilson, MSW, CFRE, CAE

Executive Director

The Foundation of the Pennsylvania Medical Society Reaches Strategic Milestone by Adding Nurse Peer Assistance Monitoring Program

Effective, January 1, 2024, The Foundation of the Pennsylvania Medical Society achieved a significant milestone in its efforts to support safety-sensitive professionals in the health care team; The Foundation was awarded the contract for Nurse Peer Assistance Monitoring in the Commonwealth.

To address the unique needs of nurses, dietitian-nutritionists, and their students, **The Foundation launched the Nurses' Health Program (NHP)**. This initiative expands its long-standing commitment to assisting health care professionals with challenges related to substance use, mental health, and behavioral concerns.

In preparation for this growth, The Foundation hired and trained a dedicated team, including five case managers, a part-time medical director, an administrative assistant, and two licensed nurse consultants. This team is committed to delivering exceptional services to program participants. Stakeholders can **meet the team and learn more about the NHP at www.panhp.org**.

Building on the reliable services of the Physicians' Health Program, the NHP aims to become a trusted ally for health systems, private employers, educational institutions, and other stakeholders. The Foundation remains steadfast in its mission to support the evolving needs of safety-sensitive professionals in the Commonwealth.

The NHP invites all stakeholders to reach out as partners in supporting professionals and ensuring their ability to thrive in their chosen fields.



PENNSYLVANIA PHYSICIANS' HEALTH PROGRAM

For more than 35 years, the PA PHP has provided monitoring services to Pennsylvania physicians, physician assistants, dentists, and other eligible licensed professionals and trainees who are experiencing issues related to substance use disorders, mental health and other behavioral concerns. The services of the PA PHP are confidential.



PA PHP MISSION

Our mission is to promote early identification and facilitate rehabilitation of physicians and other eligible health care professionals and trainees with concerns relating to substance use disorders, mental health disorders, and/or behavioral concerns. Our goal is to coordinate assessment and treatment as well as provide monitoring and advocacy to ensure the safe practice of their profession, and the safety of the public.



Physicians'
HEALTH
Program

The Foundation of the Pennsylvania Medical Society

PENNSYLVANIA PHYSICIANS' HEALTH PROGRAM

October 1, 2023, the PHP welcomed pharmacists and student pharmacists to peer assistance monitoring services in the PHP.

IN 2024, THE PA PHP:

Received **197** total referrals

Signed **83** agreements

Average number of cases monitored
per month in 2024 = **360** cases

Total Number of Agreements	83
Substance Use Disorder	41
Re-signing	16
Interstate	12
Sobriety Challenge	9
Psychiatric	2
Long-Term	3
Lifetime Agreements	0
Non-Advocacy	0
Occupational	0

Referrals by License Type	
DDS	9
DHY	11
DMD	8
DO	33
DPM	3
EFDA/DASST	8
MD	70
PA/PAC	9
ST	15
VMD	1
PharmD	16
RPh	14

18 total Educational Presentations

16 Participant Assistance Fund Scholarships were awarded in 2024, totaling \$3,687.50.

The PA PHP continues to be involved with the Federation of State Physician Health Programs.

- Executive Director of The Foundation, Heather Wilson, MSW, CFRE, CAE is on the Board of Directors and Fundraising Committee.
- Program Director, Tiffany Booher, MA, LPC, CAADC, CIP, CCSM is on the Performance Enhancement and Effectiveness Review Committee.
- Medical Director, Raymond Truex, Jr. MD, FACS, FAANS is on the Membership Committee and Nominating Committee.
- Medical Director, Edwin Kim, MD, DABPN, MRO serves on the Board of Directors as President-Elect and is part of the Publications Committee, Public Policy Committee, and Ethics Committee.

PENNSYLVANIA NURSES' HEALTH PROGRAM

The mission of the Nurses' Health Program is to promote early identification and facilitate rehabilitation of nurses, dietitian-nutritionists, and student nurses with concerns relating to substance use disorder, mental health disorders, and/or behavioral concerns.

IN 2024, THE PA NHP:

Received **858** total referrals

Signed **144** agreements

Average number of cases monitored
per month in 2024 = **749** cases

Total Number of Agreements 144

Substance Use Disorder	115
Re-signing	10
Interstate	1
Sobriety Challenge	15
Psychiatric	2
Long-Term	0
Lifetime Agreements	0
Non-Advocacy	1
Occupational	0

Referrals by License Type

CRNA	1
CRNP	18
LDN	6
LPN	303
RN	527
ST	3



STUDENT FINANCIAL SERVICES



**STUDENT
FINANCIAL
SERVICES**

The Foundation of the Pennsylvania Medical Society

The Foundation of the Pennsylvania Medical Society supports medical students by easing their financial burden with low-cost student loans and scholarships. Pennsylvania residents attending medical school enjoy personalized customer service tailored to their unique needs.

With the power of your generosity, the future of medical education is affordable. Since 1948, The Foundation awarded loans and scholarships totaling **\$25,590,162 to 4,893 students.**

LOANS

In 2024, The Foundation awarded **\$795,000** in loans to **62 students.** Loan awards **increased 8%** or nearly **\$65,000** over the 2023 awards.

The interest rate on Foundation loans disbursed for the 2024-2025 academic year was more than 2% and 3% lower than federal student loans.

Students at 8 accredited medical schools across Pennsylvania received a loan in 2024.

"The Foundation loan has played a vital role in supporting our students at PCOM, providing them with the financial resources they need to pursue their medical education and training. By reducing the financial burden, the loan allows our students to focus more on their studies, clinical experiences, and ultimately, their future careers in healthcare. We are deeply grateful for the ongoing partnership with The Foundation and for the continued support of our future physicians."

— Dez Nixon, Assistant Director of Financial Aid and Financial Wellness Coordinator, Philadelphia College of Osteopathic Medicine (PCOM)



PCOM, thank you for being a loan partner committed to supporting future physicians.



SCHOLARSHIPS

The Foundation awarded **28 Scholarships** totaling **\$149,300 to 24 medical students.** Scholarship support increased by **\$43,900** over 2023.

The Foundation Celebrates the Trudell Medical Excellence Scholarship

In 2024, The Foundation announced the creation of the **Trudell Medical Excellence Scholarship**, thanks to the incredible generosity of Gene and Cyndee Trudell from the Pittsburgh area. The scholarship is a **\$15,000 annual award**, the largest ever established by The Foundation, and will support a fourth-year medical student who ranks in the top 10% of their class and is committed to a career in cardiac surgery, otolaryngology surgery, or pediatric oncology.

Personal experiences with these specialties have deeply inspired the Trudells' giving. Cyndee received the gift of hearing from an otolaryngology surgeon and her father permanently lost his hearing due to a military related accident in WWII. Gene underwent multiple life-saving cardiac surgeries and their daughter, who passionately serves as a nurse, had a friend pass away from a rare blood cancer.

Gene said, **"The Foundation was a 'perfect fit' to significantly help a medical student."** The Foundation invests in future physicians with the gift of medical education, guides eligible medical professionals to achieve a life free from substance use disorders, and delivers hope to those whose clinical competency is called into question.

Watch a video on the Trudell's full story to learn more:

<https://www.foundationpamedsoc.org/trudellscholarship>



STUDENT FINANCIAL SERVICES

Allegheny County Medical Society

Medical Student Scholarship Alliance Medical Education Scholarship



Britney Fitzgerald
Penn State University
College of Medicine
Class of 2025
\$4,000



Masashi Azuma
Lewis Katz School of
Medicine at Temple
University
Class of 2026
\$2,500

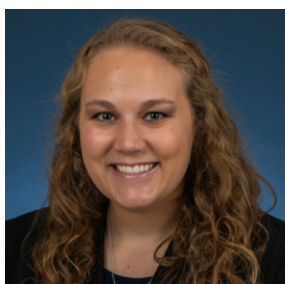


Lena G. Becker
Penn State University
College of Medicine
Class of 2026
\$2,500

Alliance Medical Education Scholarship



Isabela C. Guet-Cruza
Barbara Prendergast Award
Lewis Katz School of
Medicine at Temple
University
Class of 2027
\$2,500



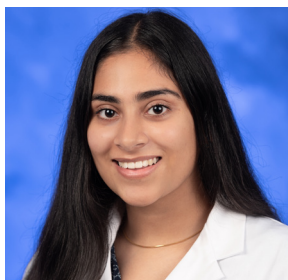
Sidney Kakabar
Lake Erie College of
Osteopathic Medicine
Class of 2026
\$2,500



Jay Pendyala
Robert and Arlene
Oyler Award
Sidney Kimmel Medical
College at Thomas Jefferson
University
Class of 2027
\$3,000

STUDENT FINANCIAL SERVICES

Alliance Medical Education Scholarship



Safitaj Sindhar

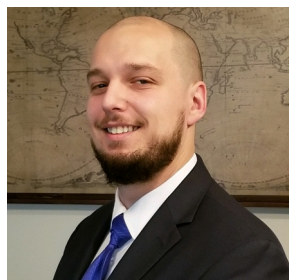
Dauphin County Medical
Society Alliance Award
Penn State University
College of Medicine
Class of 2026
\$2,500



Siena G. Wanders

Dr. William J. West Jr. Award
Lewis Katz School of
Medicine at Temple
University
Class of 2027
\$3,000

Dr. Satish & Rupal Shah Family Scholarship



Cain M. Dudek

Penn State University
College of Medicine
Class of 2025
\$3,300

Endowment for South Asian Students of Indian Descent Scholarship



Foundation Education Award Scholarship



Lehigh County Medical Auxiliary's Scholarship and Education Fund



Nikhil Ganjoo

Perelman School of
Medicine at University of
Pennsylvania
Class of 2026
\$5,000

Vershawn C. Hansen

Drexel University College of
Medicine
Class of 2028
\$7,500

Nehali Gupta

New York Medical College
Class of 2027
\$6,000

Lina & Jitendra Shah Scholarship



Isha V. Gadgil

Drexel University College of
Medicine

Class of 2028

\$5,000



Vershawn C. Hansen

Drexel University College of
Medicine

Class of 2028

\$5,000

Lina & Jitendra Shah Scholarship



Megan Kozar

Sidney Kimmel Medical
College at Thomas Jefferson
University

Class of 2028

\$5,000



Alexis Zazvrskey

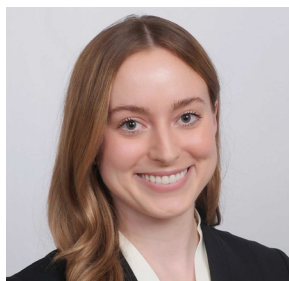
Sidney Kimmel Medical
College at Thomas Jefferson
University

Class of 2027

\$5,000

STUDENT FINANCIAL SERVICES

Lycoming County Medical Society Scholarship



Alexandra N. McQuillen
Philadelphia College of
Osteopathic Medicine
Class of 2025
\$6,000



Cade V. Neal
Geisinger Commonwealth
School of Medicine
Class of 2028
\$6,000

Scott A. Gunder, MD, DCMS Presidential Scholarship

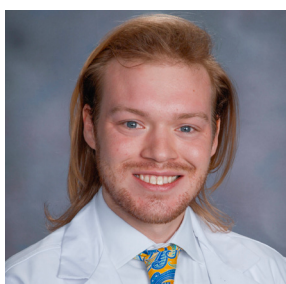


Safitaj Sindhar
Penn State University
College of Medicine
Class of 2026
\$1,500

Montgomery County Medical Society William W. Lander, MD, Medical Student Scholarship



Emma R. Kotes
University of Pittsburgh
School of Medicine
Class of 2028
\$2,500



M. Heath Patterson
Drexel University College
of Medicine
Class of 2028
\$2,500

Myrtle Siegfried, MD, and Michael Vigilante, MD, Scholarship



Sarah Raab
Philadelphia College of
Osteopathic Medicine
Class of 2028
\$2,500

STUDENT FINANCIAL SERVICES

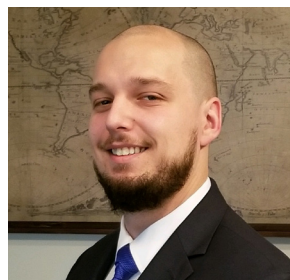
Snyder, Union and Northumberland Counties Medical Student Scholarship



Lena G. Becker
Penn State University
College of Medicine
Class of 2026
\$10,000



Adam Cole
Geisinger Commonwealth
School of Medicine
Class of 2026
\$10,000



Cain M. Dudek
Penn State University
College of Medicine
Class of 2025
\$10,000

Trudell Medical Excellence Scholarship



Jacob Kuzy
Drexel University College of
Medicine
Class of 2025
\$15,000



Salena Ringenbach
Lewis Katz School of
Medicine at Temple
University
Class of 2025
\$15,000



Allyson M. Derry
Lewis Katz School of
Medicine at Temple
University
Class of 2027
\$4,000

Truex Family Scholarship

LIFEGUARD® PROGRAM

LifeGuard® is a nationally recognized program that promotes patient safety and quality of care by providing comprehensive and individualized clinical assessments and educational remediation plans for physicians and other health care professionals referred to our program.



2024 Program Participant Completion

Re-Test NBME only	1
Practice Monitoring	1
ATM(assessment, training, monitoring Program- CDS prescribing)	1
Focused Chart Review	2
Professionalism Enhanced	3
Active Retired Physician- PA Only	3
ABEM Program	3
Re-Entry/Reinstatement	9
Quality of Care	13
Fitness for Duty	13

2024 Achievements

- 62 participants were enrolled in various programs throughout the calendar year 2024.
- 49 participants completed their respective programs in 2024.
 - 22 participants were from PA.
 - 27 participants were out-of-state participants (To date, LifeGuard® has worked with participants in 31 states and the District of Columbia).
 - Out-of-state participants in 2024 were primarily from the following 13 states: KY, NJ, NC, MA, CT, MI, AZ, TX, OH, RI, GA, NY, WV
- The proposal acceptance rate in 2024 was 88%, the highest acceptance rate to date.
- In 2024, LifeGuard® received 97 inquiries regarding LifeGuard® services.

Notable LifeGuard® News

LifeGuard® ABEM re-eligibility PREP program has been extraordinarily successful. In 2024, three physicians completed the six-month program. Since finishing the program, two have passed their qualifying exams, while the third has successfully gained re-eligibility to sit for the exam. As we move into 2025, LifeGuard® currently has five active participants in different stages of the six-month program.

In 2024, LifeGuard® initiated a comprehensive survey process for all participants completing an assessment process as well as for those applicants who chose not to proceed with LifeGuard® for their assessment. This effort is aimed at collecting pertinent data to gain valuable insights, make informed decisions, and facilitate ongoing improvement in the LifeGuard® program.

LifeGuard® program Director, Tracey Ziegler RN, BSN is now a sitting member of the Coalition for Physician Enhancement (CPE) Board of Directors as a representative of LifeGuard®. The CPE is a consortium of professionals in the United States and Canada, with expertise in quality assurance, medical education, and the assessment, licensing, and regulation of referred physicians seeking higher levels of performance in patient care.



FINANCIALS

2024 IN NUMBERS

Combined Financial Highlights *(The Foundation, PAMED Charitable Trust, Medical Legacy Fund)*
**Unaudited 2024 financials*

ASSETS, LIABILITIES & NET ASSETS

	2024*	2023
Assets	\$20,618,768	\$18,761,620
Liabilities	\$1,363,066	\$1,333,339
Net Assets	\$19,255,702	\$17,428,281

SUMMARY OF REVENUES & EXPENSES

	2024*	2023
Contributions and Admin Grants	\$1,600,945	\$1,370,536
Fee for Service	\$2,281,829	\$944,139
Student Loan Interest Income	\$236,738	\$194,049
Investment and other Revenues	\$1,211,890	\$1,573,815
Total Expenses	(\$3,499,273)	(\$2,847,043)
Excess Revenue Over Expenses	\$1,832,129	\$1,235,496

REVENUE SOURCES

Student Loan Interest Income	5%
Fee For Service	53%
Contributions and Admin Grants	42%

TOTAL PROGRAM SERVICES

Education and Service Projects	4%
Loans and Scholarships	14%
LifeGuard®	22%
PA PHP	28%
PA NHP	32%

ANNUAL OPERATING EXPENSES

- **82 CENTS** OF EVERY DOLLAR GOES TO PROGRAM SERVICES
- **11 CENTS** OF EVERY DOLLAR GOES TO MANAGEMENT AND GENERAL ADMINISTRATION
- **7 CENTS** OF EVERY DOLLAR GOES TO FUNDRAISING



DISTINGUISHED LIFETIME FELLOWS

Your generosity holds power. Thank you for your donation to The Foundation in 2024. Your gift changes lives.

Legacy Giving

Distinguished Lifetime Fellows are an elite group of donors who made provisions to advance the work of The Foundation in the areas of education, wellness and clinical excellence. Utilizing various estate planning tools, such as bequest gifts, charitable gift annuities and trusts, these members demonstrate their commitment to The Foundation's mission and ensure a lasting legacy of physician excellence for future generations.

**Deceased*

Anonymous

Dr. Doris G. Bartuska*

Dr. and Mrs. Jasper G. Chen See*

Dr. and Mrs. James M. Cole*

Dr. Jeanne A. Cooper*

Drs. Harold R. Cottle and Betty L. Cottle*

Drs. Jitendra M. Desai and Saryu J. Desai

Dr. Jan R. J. Devries* and Mrs. Klasina DeVries

Dr. J. Albert Eyer* and Mrs. Doris Eyer

Dr. Henry* and Mrs. Marian H. Fetterman

Dr. and Mrs. Edward C. Fischer*

Dr. Jean L. Forest*

Dr. Marjorie Gillespy

Dr. and Mrs. Raymond C. Grandon*

Dr. and Mrs. Kenneth P. Heaps*

Dr. and Mrs. Abram M. Hostetter*

Dr. Frank W. Jackson* and Mrs. Ellen D. Jackson

Drs. Albert S. Kroser and Lila Kroser*

Dr. Stefan P. Kruszewski

Dr. Robert L. Lasher* and Mrs. Dolores Lasher

Dr. and Mrs. John W. Lawrence*

Dr. and Mrs. Herbert Levin*

Dr. Clifford H. Lyons

Dr. and Mrs. Wilbert A. Lyons*

Dr. and Mrs. Mathew Marshall*

Dr. and Mrs. David L. Miller*

Dr. Donald E. Parlee* and Mrs. Joan Parlee

Dr. and Mrs. Joseph Pascal

Dr. Gerald W. Pifer and Martha* A. Pifer

Dr. and Mrs. James R. Regan*

Dr. and Mrs. John J. Robertson*

Dr. Joan M. Ruffle and Mr. George E. Gish

Dr. and Mrs. Joseph A. Savastio*

Dr. Joseph Schatanoff*

Dr. Gerson Schwartz*

Drs. Jitendra N. Shah and Lina J. Shah

Dr. and Mrs. Satish A. Shah

Dr. Kelly K. Siu*

Dr. and Mrs. Ferdinand L. Soisson Jr.*

Dr. and Mrs. Fred Teichman

Dr. and Mrs. A. Wayne Troncelliti

Mr. and Mrs. Gene Trudell

Dr. Raymond C. Truex Jr.

Dr. and Mrs. George J. Vukmer

Dr. and Mrs. Leonard B. Zadecky

HOSPITAL SUPPORT

Thank you to our hospital sponsors who supported The Foundation of the Pennsylvania Medical Society and the Pennsylvania Physicians' Health Program in 2024. We are grateful for your generous support!

GIVING LEVEL

♥ Ambassador \$10,000 and Above

Geisinger Medical Center	M & H
Lehigh Valley Hospital-Cedar Crest, Hazelton, Muhlenberg, Schuylkill	M & H
Penn Medicine Chester County Hospital	M
Penn Medicine Lancaster General Health	M & H
UPMC Pinnacle Harrisburg	M & H
WellSpan York Hospital	M & H

♥ Visionary \$5,000 to \$9,999

Forbes Hospital	M & H
Penn State Health Milton S. Hershey Medical Center	M & H
Reading Hospital Tower Health System	M & H
UPMC Altoona	M & H
UPMC Hamot	M
UPMC Lititz	M
UPMC Mercy	M
UPMC Passavant	M
UPMC Pinnacle Community General Osteopathic	M
WellSpan Gettysburg Hospital	M & H
WellSpan Chambersburg Hospital	M & H

Leader \$2,500 to \$4,999

AHN Saint Vincent	M
Allegheny General Hospital	M
Doylestown Hospital	M & H
Evangelical Community Hospital	M & H
Holy Redeemer Hospital and Medical Center	M

Independence Health System- Frick, Latrobe, Westmoreland Hospital	M
Indiana Regional Medical Center	M & H
Jefferson Abington Hospital	M
Jefferson Regional Medical Center	M & H
Main Line Hospitals Inc-	M
Penn Highlands Du Bois	M & H
Thomas Jefferson University Hospital	M
UPMC Hanover	M & H
UPMC McKeesport	M
UPMC Memorial	M & H
UPMC St. Margaret	M
Washington Health System	M & H
WellSpan Ephrata Community Hospital	M
WellSpan Good Samaritan Hospital	M
Western Pennsylvania Hospital	M

♥ Guardian \$1,000 to \$2,499

Allegheny Valley Hospital	M
Chan Soon-Shiong Medical Center at Windber	M & H
Eagleville Hospital	H
Einstein Medical Center Montgomery	M
Einstein Medical Center Philadelphia	M
Fox Chase Cancer Center	M & H
Heritage Valley Health System-Beaver	M
Heritage Valley Health System-Sewickley	M
Independence Health System Butler Health System	M
Independence Health System Clarion Hospital	M
Jefferson Health-Northeast	M
Jefferson Lansdale Hospital	M & H
Magee Womens Hospital of UPMC Health System	M
Meadville Medical Center	M & H
Mercy Fitzgerald Hospital	M

HOSPITAL SUPPORT

♥ Guardian \$1,000 to \$2,499

Penn Highlands Connellsville	M & H
Penn Highlands Elk	M & H
Penn Highlands Mon Valley Hospital	H
Phoenixville Hospital	M
Pottstown Hospital Tower Health	M
St. Christophers Hospital For Children	M
St. Clair Hospital	M
Temple University Hospital	M & H
Uniontown Hospital	M & H
UPMC Bedford Memorial	M & H
UPMC Childrens Hospital of Pittsburgh	M
UPMC Horizon	M & H
UPMC Jameson	M & H
UPMC Williamsport	M & H
Wayne Memorial Hospital	M & H

♥ Partner \$100 to \$499

Corry Memorial Hospital	M
Penn Highlands Brookville	M & H
Penn State Health St. Joseph	M
Titusville Area Hospital	M & H
UPMC Wellsboro	H
Wernersville State Hospital	M

♥ Benefactor \$500 to \$999

Guthrie/Robert Packer Hospital	M
Millcreek Community Hospital	M & H
UPMC Muncy	M & H
UPMC Northwest-Seneca	M
UPMC Somerset	M
Wilkes-Barre General Hospital	M

M = Medical Staff Donation
H = Hospital Administration Donation
M & H = Medical Staff & Hospital Administration Donation



DONOR RECOGNITION

Thank you
for your support of The Foundation
through your
philanthropic gifts during 2024.

GIVING CLUB | Annual Giving Level

AMBASSADOR \$10,000 OR MORE

VISIONARY \$5,000 TO \$9,999

LEADER \$2,500 TO 4,999

GUARDIAN \$1,000 TO \$2,499

BENEFACTOR \$500 TO \$999

PARTNER \$100 TO 499

CONTRIBUTOR UP TO \$99

♥ **AMBASSADOR \$10,000 +**

Coverys Community
HealthCare Foundation

Jitendra M. Desai, MD,
and Saryu J. Desai, MD

Marian H. Fetterman

Marjorie Gillespy, MD

Ellen D. Jackson

Medical Society of Virginia Foundation

Pennsylvania Allergy & Asthma
Association

Pennsylvania Medical Society

Pennsylvania Osteopathic
Medical Association

Jitendra N. Shah, MD,
and Lina J. Shah, MD

Mr. and Mrs. Gene Trudell

Raymond C. Truex Jr., MD, FACS,
FAANS, MRO

♥ **VISIONARY \$5,000 to \$9,999**

Astra Zeneca Pharmaceuticals

Bucks County Medical Society

Regeneron Pharmaceuticals

Dr. and Mr. Charles F.

Romberger-Sklarosky

Heather A. Wilson, MSW, CFRE, CAE

♥ **LEADER \$2,500 to \$4,999**

Abbvie

Atlantic Dermatology Conference

Thomas J. Ciotola, MD

Dauphin County Medical
Society Alliance

Eden Charitable Foundation

Dr. and Mrs. Jeffrey F. Gryn

Virginia E. Hall, MD, FACOG, FACP,
and Mr. John B. Hall

Incyte

Pfizer, Inc.

Pittsburgh Foundation

Cris Tarabrella

UCB

Dr. and Mrs. William J. West Jr.

DONOR RECOGNITION

♥ GUARDIAN \$1,000 to \$2,499

Margaret S. Atwell, MD,
and Mr. Jerrold Atwell

Dr. and Mrs. Bruce A. Brod

Judy Bucko Herman

Ramon C. Burket, MD

Dr. and Mrs. Charles N. Burns Jr.

Kenneth M. Certa, MD

Dr. and Mrs. Bennett Chotiner

Dr. and Mrs. Christopher J. Daly

Daniel T. Dempsey, MD, FACS

Dermatology Partners

Dr. and Mrs. William R. Dewar III

Jeff Germani

Dr. and Mrs. David W. Gray

Richard J. Hazzouri, CFA

Virginia B. Henning

Jeffrey Hoffman, MD

Lawrence R. John, MD
and Martha D. John, MD

Johnson & Johnson

Daniel B. Kimball Jr., MD, FACP,
and C. Eve J. Kimball, MD

Joyann A. Kroser, MD,
and Mr. Jason Schmoyer

Dr. Linda L. Lapos
and Mr. Paul Wirth

Jon D. Lepley, DO, FAOAAM

Dr. and Mrs. Mark A. Lopatin

Lynn M. Lucas-Fehm, MD, JD

Clifford H. Lyons, MD

Daniel A. Mascarenhas, MD,
and Suzette Barreto, MD

Renee J. Mathur, MD

William M. Murray, MD

Parag D. Parekh, MD,
and Purvi Parekh, DO

Mr. and Mrs. Benjamin Pascal

Martin P. Raniowski, MA, CAE, FCPP

Reading Caduceus Group

Dr. and Mrs. Andrew B. Roberts

Jon A. Shapiro, MD, DABAM,
and Babette Zemel, PhD

Dr. and Mrs. William A. Sweet

Matthew Topley

Dr. and Mrs. John P. Williams

♥ BENEFACTOR \$500 to \$999

J. Matthew Bohning, MD

Dr. and Mrs. Roy D. Brod

Dr. and Mrs. Daniel M. Bursick

Charles Cairns, MD

Dr. and Mrs. Theodore A. Christopher

Cynthia T. DeMuth, MD,
and William W. DeMuth, MD, FACS

Duquesne University

Todd Fijewski, MD

Kurt O. Findeisen, MD

Dr. and Mrs. John P. Gallagher

Geisinger Medical Center

Candace R. Good, MD

Dr. and Mrs. Andrew W. Gurman

DONOR RECOGNITION

Dr. and Mrs. Michael F. Hagerty

Dr. and Mrs. Enrique Hernandez

Dr. and Mrs. William D. Hetrick

F. Wilson Jackson III, MD,
and Cynthia L. Jackson, MD

Edward W. Jew III, MD

Dr. and Mrs. Alex B. Juhasz

Dr. and Mrs. Ravi Kant

Dr. and Mrs. Paul E. Karis

Kent E. Kester, MD

Wilhelmina Cornelia Korevaar, MD, MMM

Kalyan S. Krishnan, MD,
and Geeta Krishnan, MD

Robin Kroll, MD

Dr. and Mrs. Heath B. Mackley

Magee Womens Hospital of UPMC
Health System

Morgan M. McCoy II, MD

Regina Numrich

Patrick Francis Odonnell, DO

Dr. and Mrs. Edward M. Overfield

PCOM Health Centers

Carol R. Regueiro, MD,
and Miguel D. Regueiro, MD

Dr. and Mrs. Warren L. Robinson Jr.

Lorraine L. Rosamilia, MD

Brian Rowan

Kristen M. Sandel, MD, FACEP, FAAEM

Gary G. Sauer, MD

Dr. and Mrs. William E. Schaeffer Jr.

David A. Talenti, MD

Lynda T. Thomas-Mabine, MD, FACOG

Dr. and Mrs. Robert C. Trautwein

Marla Triano, MD, and
John C. Rodgers, MD

James Ulery Jr., MD

Dr. and Mrs. William A. Van Decker

Carla Vigilante

Annette Weaver

Timothy D. Welby, MD

Philip M. Wildenhain, MD,
and Sarah L. Wildenhain, MD

Dr. and Mrs. G. Alan Yeasted

♥ PARTNER \$100 to \$499

Jose R. Acosta, MD

Paul Ahlers, MD

Robert K. Aichele Jr., DO

Mohammad M. Akbar, MD, FACS

Natasha R. Alligood-Percoco, MD

Sheila M. Anderson, DO

Holly Appleberry, DO

Mark C. Austerberry

Michael J. Azar, MD,
and Carol H. Azar, MD

Dr. and Mrs. Edward P. Balaban

Michael J. Banach, MD,
and Laura M. Duda, MD

Edward J. Baranski, MD, FACS

Dr. and Mrs. Charles F. Barbera

DONOR RECOGNITION

D. Michael Baxter, MD,
and Mrs. Denise Curran

Emily K. Beary, DO

Christine H. Beck, MD,
and Mr. Adalgerly Beck

Edward Bedrick, MD

Pranam Ben

Kelly W. Biggs, MD

Dr. and Mrs. Albert W. Biglan

Vint Rolston Blackburn, MD

Anthony F. Bonagura, MD

Tiffany M. Booher, MA, LPC, CAADC,
CIP, CCSM

Michael A. Bookman, MD,
and Maria Pia Platia, MD

Dr. and Mrs. Robert W. Bragdon

Dr. and Mrs. Hugh W. Brallier

Maria A. Braun, MD

Wendy E. Braund, MD

Matthew E. Brown, MD

Jan K. Brydon, MD

Jeffrey Buetikofer, MD

John B. Bulger, DO,
and Michele A. Neff-Bulger, DO

Dr. and Mrs. Jerome M. Burke

Karyn L. Butler, MD

Clara A. Callahan, MD,
and Mr. Peter Goodman

Susan Caputo

Herbert Caskey, MD

Dr. and Mrs. Raymond M. Catton

George Chacko, MD,
and Blessy Methikalam, MD

Thomas S. Chang, MD

Drs. Maurizio
and Lindy Lee W. Cibischino

Dr. and Mrs. Franklin E. Cignetti

Marc C. Cohen, MD,
and Marjorie Curtis-Cohen, MD

Dr. and Mrs. Alan Cohler

Dr. and Mrs. Kenneth B. Conner

Dr. and Mrs. William F. Coppula

Joseph M. Corvasce, MD

Crawford Consulting Services

Laurence Cunningham, DO

William M. Curtin, MD

Rachel Mojisola Dada, MD

Richard H. Daffner, MD

Patricia L. Dalby, MD

Hiram T. Dale Jr., MD

Dr. and Mrs. George F. Daniels Jr.

Dr. and Mrs. Charles E. Darowish

Magee L. DeFelice, MD

Dr. and Mrs. Paul F. Dende

Dr. and Mrs. David F. Dieteman

Dr. and Mrs. Henry T. Dietrich

Scott A. Dietrich, MD

Dr. and Mrs. John S. Dobrota

Dr. and Mrs. Thomas W. Dooley

Elizabeth T. Drum, MD

Gay D. Dunne, MD

Jeremiah W. Eagen, MD, FASN, FACP

DONOR RECOGNITION

Betsey A. Egger, MD,
and Mr. David Egger

Rosalie Elenitsas, MD

Barbara C. Elko, MD

Emerson

Dr. and Mrs. Ronald D. Emkey

Katherine C. Erlichman, DO,
and Mr. Edward Erlichman

Everett Hills MD -
Function Focused PMR Care LLC

Fairmount Pediatrics and
Adolescent Medicine

Dr. and Mrs. Edward C. Fallon III

Patrick R. Feehan, MD

Dr. and Mrs. Kalmen A. Feinberg

Dr. and Mrs. Herbert Fellerman

Dr. and Mrs. Gary S. Fischer

Dr. and Mrs. Todd R. Fisher

Karin Flynn-Rodden, MD

Dr. and Mrs. Barry R. Follweiler

Mary E. Fontana-Penn, MD

Dr. and Mrs. Daniel Forman

Dr. and Mrs. Gregory R. Frailey

Renee Frank, MD,
and Brian L. Frank, MD

Dr. and Mrs. Martin L. Freifeld

Lisa Galante, MD

Romi Garvey

Dr. and Mrs. Laurence J. Gavin

Josette Gephart

Dr. and Mrs. Arthur M. Gershkoff

Gisoo Ghaffari, MD

Kalyanmay Ghoshhajra, MD

Dr. and Mrs. Angus T. Gillis

Dennis L. Gingrich, MD

Dr. and Mrs. George H. Gleeson

Courtney Leigh Goettel, MD

Dr. Harvey and Rabbi Paula Goldberg

Dr. and Mrs. Stephen M. Gollomp

Dr. and Mrs. Russell L. Gombosi

Ian Michael Goonewardene, MD

Dr. and Mrs. Richard L. Green

Gertrude M. Green

Robert B. Greer III, MD, FACS, and
Mrs. Barbara McCarthy

Dr. and Mrs. Joseph Guaraldo

Julie A. Gubernick, MD

Lawrence J. Guzzardi, MD

Dr. and Mrs. Alfred Halas

Dr. and Mrs. Patrick J. Hanley

Brian A. Hannah, MD

Gretchen A. Harmon, MD

Dr. and Mrs. Leo M. Hartz

Catherine B. Heilman, MD

Marilyn Heine, MD

Dr. and Mrs. George F. Henning III

William L. Hennrikus, MD, and
Eileen F. Hennrikus, MD

Andrew Herlich, MD, and
Thelma L. Herlich, MD

Dr. and Mrs. John F. Hiehle

DONOR RECOGNITION

Dianne D. Hotmer, MD, and
Mr. Douglas Hotmer
Dr. and Mrs. Raymond J. Hubbard
Carrie A. Hufnal, MD
Anthony R. Ignocheck, MD
Brenda Iliff
Mark V. Jarowenko, MD, FACS
Dr. and Mrs. Asif Javed
Edward W. Jew Jr., MD
Joseph C. Jones, MD
Michelle Jozwiak
Dr. and Mrs. Carmen J. Julius
Dr. and Mrs. Donald L. Kahn
Dr. and Mrs. Donald B. Kamerer
Mr. and Mrs. Robert Kampmeiner
Dr. and Mrs. Bindukumar C. Kansupada
Mark and Donna Kendig
Denise M. Kenna, MD, FACS
Cadence A. Kim, MD, FACS
Jae-Chil Kim, MD
Mrs. Rachel Kirk
Dr. and Mrs. Kevin Kist Jr.
Linda A. Kloss, DO
Robert V. Kolecki, MD, FACS
Dr. and Mrs. Ronald D. Kratz
Barbara G. Kuhlengel, MD, and
Keith R. Kuhlengel, MD, FACS
Dr. and Mrs. Sambhu N. Kundu
Kaushik Kundu, MD
Dr. and Mrs. C. Darrell Lane

David C. Leber, MD, FACS
Dr. and Mrs. Stanton S. Leboutiz
Dr. and Mrs. Mark R. Lentz
Edward Levin, PhD
Elaine R. Lewis, MD
Dr. and Mrs. Benjamin J. Lloyd
David Lucas, MD, MBA
Andrew Lutzkanin III, MD, and
Kristen M. Lutzkanin, MD
Anne L. Macek, MD, and
Mr. Rek Macek
Mr. and Mrs. Edwin MacFarland
Helga O. Magargal, MD
Dr. and Mrs. William J. Malone III
Dale M. Mandel, MD, FACS
Dr. and Mrs. John R. Mantione Jr.
Gregory V. Marcotte, MD
Dr. and Mrs. Jeffrey S. Marshall
Dr. and Mrs. Donald E. Martin
Marion E. Mass, MD, and
Stephen C. Mass, MD
Beth A. Maxwell, MD
Peter J. McConnell, MD
Dr. and Mrs. Douglas S. McCracken
Robert F. McFadden, MD
Joseph J. McHugh, MD, FACEP, and
Mrs. Diane Dobbs
Dr. and Mrs. Robert M. McNamara
Peter E. McNeil, MD
Bizhan Micaily, MD, FACR
Dr. and Mrs. John P. Michel

DONOR RECOGNITION

Beverly A. Mikuriya, MD	Dr. and Mrs. Clifford H. Pemberton
O. Fred Miller III, MD	Haragopal S. Penugonda, MD, and Dwaraki B. Penugonda, MD
Michael A. Moclock, MD	Dr. and Mrs. Louis A. Persic Jr.
Bernadine B. Moglia, MD, and Mr. William E. Moglia	Wayne W. Peternel, MD
Mohan and Sanjeevi Family Fund	Wesley Peterson, MD
Deborah K. Monko	Dr. and Mrs. Yeshwant G. Phadke
Angelica T. Montesano-Millos, MD	Ronald B. Phillips, DO
Eileen M. Moser, MD	Dr. and Mrs. Paul A. Piccini
Dr. and Mrs. Matthew B. Naegle	Pittsburgh Caduceus Group
Northampton County Medical Society Alliance	The Honorable Thomas A. Placey
Dr. and Mrs. Robert C. Oelhaf, Jr.	Dr. and Mrs. Alec B. Platt
Kathleen A. O'Farrell, MD	Gwendolyn A. Poles, DO, FACP
Olubunmi Kikelomo Ojikutu, MD	Mark A. Posner, MD
Dr. and Mrs. Thomas P. Olenginski	Danae M. Powers, MD
Nancy C. Olinger, MD	Julie Prazich, MD
Dr. and Mrs. Charles F. Orellana	Brenda L. Raphael, MD, and Mr. John P. Raphael
Dr. and Mrs. Steven M. Orland	Paul L. Reardon Jr., MD
Jill M. Owens, MD, and Mr. Jim Owens	Dr. and Mrs. Jonathan E. Rhoads Jr.
Arlene C. Oyler	John S. Richards, MD
John J. Pagan, MD, FACS, and Mary E. Pagan, MD	Karen A. Rizzo, MD, FACS, and Jay A. Rizzo, DMD
Amelia A. Pare, MD, and Kyung S. Park, MD	Richard E. Rohr, MD
Mukul L. Parikh, MD, and Neelima M. Parikh, MD	Dr. and Mrs. Domenick N. Ronco
Carolyn P. Decker, MD	Donna Bayer Rovito
Dr. and Mrs. Joseph Pascal	Dr. and Mrs. Robert A. Ruggiero
Sam Patel	Michael Rusli, MD, and Mrs. Ann Ouyang
Timothy D. Pelkowski, MD	Farouq A. Samhoury MD, FACS
	William Sandel Family

DONOR RECOGNITION

Milton Sands Jr., MD

Joseph W. Sassani, MD

Wendy Schaenen, MD

Drs. John C. and Beverly B. Schantz

Steven K. Schirk, MD, FACEP

Edward P. Schuman, MD, and
Amy H. Zucker, MD

Dr. and Mrs. Stephen L. Schwartz

Dr. and Mrs. Peter L. Schwartz

Ira Schwartz, MD, PhD, FACS

Lynnae Schwartz, MD

Lucyann M. Sciandra, DO

Kevin C. Scott, MD

David James Seastone, DO, PhD

Arlene G. Seid, MD

Hope S. Selarnick, MD

Drs. Mylappan and
Vijayalakshmi Selvaraj

Dr. and Mrs. Mohammad Shafique

Catherine Sharkness, MD

Saurabh Sharma, MD

Robert G. Sharrar, MD

Wei Shaw, DO

Rebecca M. Shepherd, MD

Robert G. Shultz, MD

Michael Cameron Sleet, MD

Thomas C. Smitherman, MD

Dr. and Mrs. Stanton N. Smullens

David N. Speranza, MD

Dr. and Mrs. Calvin R. Stafford

Lyndia Stauffer

Mary Jane Stoner

Matthew D. Straesser, MD

Patrick Strollo Jr., MD, and
Diane C. Strollo, MD

Angela M. Stupi, MD

Michael Suk, MD, JD, MPH

Ellen M. Tedaldi, MD

Dr. and Mrs. Richard L. Tepper

Krishnamoorthy Thamburaj, MD

David Thompson

Lawrence W.C. Tom, MD

Drs. Robin G. and Flora M. Torres

Dr. and Mrs. Walter H. Tsou

Onuorah I. Umeh, MD

Ravi Vinnakota, MD, MPH

Shayan Waseh, MD

Thomas J. Weida, MD, and
Jane A. Weida, MD

Sigmund Weitzman, MD

Dr. and Mrs. Wayne L. Weston

Metza Whiteley

Ashley E. Wilkerson, MD

Dr. and Mrs. Thomas A. Witkowski

Jason R. Woloski, MD

James Wong, MD

Dr. and Mrs. George A. Woodward

Dr. and Mrs. George E. Woody

Dr. and Mrs. John A. Yauch

Terry N. York, DO

DONOR RECOGNITION

Dr. and Mrs. Thomas A. Young
Linda M. Young, MD
Bonnie M. Zehr, MD
Joan H. Zeidman, MD
Jolanta Zelaznicka, MD
Dr. and Mrs. Dennis J. Zeveney Jr.

♥ CONTRIBUTOR Up to \$99

Dr. and Mrs. Richard P. Abramowitz
Domingo T. Alvear, MD, and
Veneranda B. Alvear, MD
Lakya Anantharamaiah Amaranatha, MD
Ryan Francis Andrulonis, MD
Donna L. Antonucci, MD, and
Mr. I. Bruce Schwartz
Abhishek Narayan Aphale, MD
Catherine Arner
Eric P. Balaban, MD
Dr. and Mrs. Ronald B. Barg
Fouad A. Bassilios, MD
Shernavaz D. Bharucha, MD
David B. Bixler
Amy Blankenhorn
Dr. and Mrs. Jeffrey S. Blinder
Adwoa Kyeiwa Boahene, MD
Richard J. Boal, MD
Stacy J. Bolden
Annette R. Borger, MD
Donald S. Bourne, MPH, PhD

Dr. and Mrs. Thomas R. Bowen
Mr. Thomas J. Brouse
Wilma K. Brucker, MD
Grace A. Bruner
Lucy J. Cairns, MD
Roger Louis Cambor, MD
Dr. and Mrs. Howard J. Caplan
Fitzgerald J. Casimir, MD
Dr. and Mrs. Charles A. Castle
Mark F. Catterall, MD
Arvind R. Cavale, MD, FACE, FCPP
Dr. and Mrs. Lee A. Celio
Stanley S. Chaplin, MD, and
Ms. Janet Giuliani
Dr. and Mrs. Arthur Chernoff
Marion C. Childs, MD, and
Mr. James Burns
Andrew Chisholm
Hey J. Chong, MD
Daniel A. Church, MD
Kara E. Coffey, MD
Robert E. Coifman, MD
Giovanni Matteo Colella, MD
Dr. and Mrs. Bruce A. Colley
Ryan A. Collins, MD
Dr. and Mrs. William G. Combs
David J. Cooper, MD
Wayne Crawford
Leslie Cree
Dr. and Mrs. James L. Cristol

DONOR RECOGNITION

Roderick Cross, MD	Mark G. Graham, MD
Berenice Curi Pesantes, MD	Patricia F. Groleau, MD
Ramon J. Deeb, MD	Chelsea Gros
Michael A. DellaVecchia, MD, FACS, FCPP, FICS, PhD, FAAO, FASLMS	Guillermo Gutierrez, MD
Dr. and Mrs. James A. DeMatteis	Fawzi P. Habboushe, MD, FACS, and Christa P. Habboushe, MD
Lawrence A. Denino, MD	Dr. and Mrs. Daniel Haimowitz
Ali Haider Dhanaliwala, MD	Ahmad Hameed, MD
Erika Alicia Dillard, MD	Alexander Hamling, MD
Bonnie B. Dorwart, MD, and Mr. William Dorwart	Elisabeth A. Hasslacher, MD
Dr. and Mrs. Bhavank V. Doshi	Dr. and Mrs. Donald N. Haupt
Rosemary Duda, MD	Kurt M. Heil, MD, and Jane Hughes, MD
Daniel R. Eichorn, DO	Jennifer Rebecca Heimall, MD
Howard J. Eisen, MD	Sarah E. Henrickson, MD
Robert A. Ettlinger, MD	Dr. and Mrs. Sanford L. Herold
Rhianna Etzweiler	Neil A. Hoffman, MD, and Mrs. Judith Kraines
Madeleine Q. Ewing MD, FACS	Loren Hunt
Richard E. Ferraro, MD, and Katarzyna M. Ferraro, MD	Dr. and Mrs. Donald J. Jakubek
Joanne Finn, MD, FACS	Eric C. Jaxheimer, MD, FACS
Haidn Foster, MD	Ahashta T. Johnson, MD
David W. Frederick, MD	Linda T. Johnson, MD
Dr. and Mrs. William A. Freeman	Alana Jones, DO
Dr. and Mrs. John P. Furia	Dr. and Mrs. David M. Joyner
Christine M. Gallis, MD, and Mr. Gary Gallis	Dr. and Mrs. Steven R. Kafrissen
John J. Gallo, MD	Dr. and Mrs. Thomas N. Kaminski
Sandra M. Gawchik, DO	Matthew T. Keener, MD
Alex Gliansky, MD	Dr. and Mrs. Ian A. Kellman
Dr. and Mrs. Mark A. Goodman	Ara Khoylyan
	Glenn Michael Klucka, DO

DONOR RECOGNITION

Michael M. Koerner, MD, PhD

Dr. and Mrs. Aaron J. Kolb

Dr. and Mrs. Harold P. Koller

Marilyn B. Krch, MD

Mark Andrew Kudes, MD

Olivia Kunitsky

Dr. and Mrs. Ralph A. Lanza

James Robert Latronica, DO

Rachel D. Lee, MD

Marshala Lee

Lehigh County Medical Society

Wilma C. Light, MD

Seth Paul Linker, MD, FACS

Louise M. Lisi, MD

Richard W. Long

Katherine H. Lund, DO

Lycoming Internal Medicine Inc

Drs. Gregory T. and
Diana J. Lyon-Loftus

Dr. and Mrs. Thomas E. Mackell

Kathleen E. Magness, MD

John P. Maher, MD, MPH

Calin Manea

Dr. and Mrs. Thomas N. Marino

Dr. and Mrs. Robert F. Marvin

Helen Mashek, MD

James M. Mattucci, MD

Dr. and Mrs. Kenneth J. May Jr.

John N. McCartney, DO

Susan J. McGarrity, MD

Patrick F. McSharry, MD

Dr. and Mrs. Edward J. McVay

Dr. and Mrs. Deepak Mehrotra

Dr. and Mrs. Yogin P. Mehta

Mark R. Mietz

Audrey E. Mills

Dr. and Mrs. James Douglas Mills

Ricardo J. Mitre, MD

Dr. Patricia A. Montgomery and
Mr. Montgomery

Dr. and Mrs. David H. Moore

Jonathan A. Morgan, MD

Alexsandra Kathrine Motroni, MD

Dr. Darilyn V. Moyer and
Mr. Scott B. Rosenberg

Winslow W. Murdoch, MD

Robert Musser

Gillian Rose Naro, MD

Paul B. Nelson, MD

Long H. Nguyen, MD

Duy B. Nguyen, MD

Matthew A. Nikoloff, MD

Abhishek Ravindra Nitturkar, MD

Dr. and Mrs. John Notaro

Ward J. Odonnell, MD

Donald Oken, MD

Joyce Pacek

Nancy H. Park, MD, and
Mr. Luke Hingson

Peter C. Patukas, MD

DONOR RECOGNITION

Rita M. Pechulis, MD	Cristie Lynne Staples, DO
Shannon K. Penland, MD	Mariya Starostina
Andrew D. Peshek, MD	Lori Storm
Roger D. Peterson, MD	Suburban Endocrinology Associates PC
Raul Henrique Porto Perez, MD	Dr. and Mrs. Charles S. Sutton
Dr. and Mrs. Robert H. Potter Jr.	Sakdidej Suwan, MD, and Nipapan Suwan, MD
Tracy R. Prematta, MD, and Michael J. Prematt, MD	Dr. and Mrs. Edward E. Szoke
Shawna Rabbas	Thomas Michael Tambouratzis, MD
Dr. and Mrs. Dante A. Ragasa	Eren Taydas, MD
Julio A. Ramos, MD	Dr. and Mrs. Jerry W. Terwilliger
Christie Gail Regula, MD	Raghavendra Tirupathi Govindaraju, MD, FACP, FRCP
Nida B. Rizvi, MD	Dr. and Mrs. Martin D. Trichtinger
Umer Rizwan, MD	Hugo J. Villanueva, MD
Anthony R. Rooklin, MD	Lavinia Mumtaz Wainwright, MD
Dr. and Mrs. Howard B. Rosen	Eric A. Walker, MD
Dr. and Mrs. Jay E. Rothkopf	Dr. and Mrs. David L. Wampler
Kerry Royer	Dawn Jennifer Geisler Wang, MD
Heather Ann Ruddock, MD	Kristine M. Ward, MD
Ethel Ruth	Daniel I. Weber, MD, and Nina M. Castillo
Dr. and Mrs. Victor H. Santillan	Bruce L. Wilder, MD
Dr. and Mrs. Ralph Schmeltz	Samuel Earl Wilson, MD
Dr. and Mrs. Thomas J. Schmitz	David B. Wilson, MD
Dr. and Mrs. Mark P. Shampain	Brynn S. Wolff, MD
Margrit M. Shoemaker, MD, and Daniel J. Glunk, MD	Marian Elizabeth Wulf Gutierrez, MD
Thomas M. Skeeahan, MD	Christopher Wyatt, MD
Dr. and Mrs. Raymond L. Smith	Roy G. Ysla, MD
Benjamin Franklin Smood, MD	Dr. and Mrs. Robert M. Zemble
Sandra S. Snyder	Yijun Zhang, MD
Shubha Srinivasareddy, MD	Robert M. Zuckerman, MD

2024 MEMORIAL CONTRIBUTIONS

- ♥ **Joanne Bergquist**
Donna Baver Rovito
- ♥ **Leroy C. Erickson**
Beth Burt and Jan Erickson
Virginia B. Henning
Heather A. Wilson, MSW, CFRE, CAE
Deborah K. Monko
- ♥ **David R. Gater, MD**
Anonymous
- ♥ **Leroy B. Gerchman, MD**
Lehigh County Medical Society
- ♥ **Doris N. Grandon**
Dauphin County Medical
Society Alliance
Arlene C. Oylar
Caryl Schmitz
- ♥ **George R. Green, MD**
Gertrude M. Green
- ♥ **Chandrakant Kansupada**
Dr. and Mrs. Bindukumar
C. Kansupada
- ♥ **Albert S. Kroser, DO**
Joyann A. Kroser, MD and
Mr. Jason Schmoyer
- ♥ **Robert F. Kunhein, MD**
Kelly W. Biggs, MD
- ♥ **Paul D. McMullen, MD**
Anonymous
Leslie Cree
Eric, Leah and Romi Garvey
Loren Hunt
Michelle Jozwiak
Mark and Donna Kendig
Mark R. Mietz
Audrey Elizabeth Mills
Shawna Rabbas
- ♥ **John J. Mecca, MD**
Lehigh County Medical Society
- ♥ **Robert F. Pacek, MD**
Joyce Pacek
- ♥ **Donald E. Parlee, MD**
J. Matthew Bohning, MD
- ♥ **Benjamin C. Schechter, MD**
Raymond C. Truex Jr. MD,
FACS, FAANS, MRO
- ♥ **Ronald E. Smoll**
Dr. and Mrs. Joseph Pascal
- ♥ **Sylvia W. Sussman, MD**
Lehigh County Medical Society
- ♥ **Derrick Thomas**
Lynda T. Thomas-Mabine,
MD, FACOG, FCPP
- ♥ **Catherine A. Tighe**
Dr. and Mrs. Joseph Pascal
- ♥ **Kathleen D'Angola Ward**
Dr. and Mrs. Joseph Pascal
- ♥ **John P. Whiteley, MD**
Metza Whiteley
- ♥ **Dr. Edward Williams**
Dr. and Mrs. John P. Williams

2024 HONORARY CONTRIBUTIONS

♥ Tribute Gifts – Gifts Received in Honor of

Kristen M. Sandel, MD, FAAEM, FACEP



**In honor of outgoing PAMED President,
Kristen M. Sandel, MD, FAAEM, FACEP**

Anonymous

Holly C. Appleberry, DO, MBA

Margaret S. Atwell, MD, and

Mr. Jerrold Atwell

Mark C. Austerberry

Dr. and Mrs. Edward P. Balaban

Dr. and Mrs. Charles F. Barbera

D. Michael Baxter, MD, and

Mrs. Denise Curran

David B. Bixler

Stacy J. Bolden

Charles B. Cairns,

MD, FACEP, TAAEM, FAHA

Susan Caputo

Kenneth M. Certa, MD

Dr. and Mrs. Theodore A. Christopher

Wayne Crawford

Patricia L. Dalby, MD

Dr. and Mrs. William R. Dewar III

Betsey A. Eggler MD, and Mr. David Eggler

Dr. and Mrs. Edward C. Fallon III

Todd R. Fijewski, MD, FACEP

Haidn Foster, MD

Dr. and Mrs. John P. Gallagher

Dennis L. Gingrich, MD

Ian M. Goonewardene, MD

Marilyn J. Heine, MD, FACEP, FACP

F. Wilson Jackson III, MD, and

Cynthia L. Jackson, MD

Ahashta T. Johnson, MD

Daniel B. Kimball Jr., MD, FACP, and

C. Eve J. Kimball, MD

Richard W. Long

Lynn M. Lucas-Fehm, MD, JD

Marion E. Mass, MD, and

Stephen C. Mass, MD

Dr. and Mrs. Robert M. McNamara

Winslow W. Murdoch, MD

Gillian R. Naro, MD, MEd

Dr. and Mrs. Robert C. Oelhaf Jr.

Olubunmi K. Ojikutu, MD

Nancy C. Olinger, MD

John J. Pagan, MD, FACS, and

Mary E. Pagan, MD

Danae M. Powers, MD

Lorraine L. Rosamilia, MD

Donna Bayer Rovito

Kerry Royer

William Sandel Family

Arlene G. Seid, MD

Lori Storm

Angela M. Stupi, MD

David A. Talenti, MD

David J. Thompson

Raghavendra Tirupathi Govindaraju,

MD, FACP, FRCP

Lavinia Mumtaz Wainwright, MD

Heather A. Wilson, MSW, CFRE, CAE

Bonnie M. Zehr, MD

2024 HONORARY CONTRIBUTIONS

♥ **Charles Cutler, MD, MACP**

Dr. Darilyn V. Moyer and Mr. Scott B. Rosenberg

♥ **F. Wilson Jackson III, MD, AGAF, FACG, FACP**

Anonymous

♥ **Lawrence R. John, MD**

Crawford Consulting Services

Robert Musser

♥ **John J. Pagan, MD, FACS, MBA and Mary E. Pagan, MD**

Dr. and Mrs. Jerome M. Burke

♥ **Martin D. Trichtinger, MD**

Grace A. Bruner

Mr. and Mrs. Edwin MacFarland

Sandra S. Snyder

♥ **Raymond C. Truex Jr., MD, FACS, FAANS, MRO**

Eden Charitable Foundation

♥ **Grace Whiteley Graham, MD**

Metza Whiteley

FOR MORE THAN 60 YEARS,

The Foundation of the Pennsylvania Medical Society has been serving physicians during life's most challenging moments.

If you would like to make a gift to support our mission, please visit

www.foundationpamedsoc.org/donate.

2024 SUSTAINER'S CIRCLE

♥ FOUNDATION 2024 SUSTAINER'S CIRCLE



The Sustainer's Circle is a special group of donors who provide a continual stream of support for Foundation programs through their regularly scheduled monthly contributions.

Tiffany M. Booher, MA, LPC, CAADC, CIP, CCSM

Charles N. Burns Jr., MD, FASAM

Susan Caputo

Kenneth M. Certa, MD

Dr. and Mrs. William R. Dewar III

Dr. and Mrs. Martin L. Freifeld

Virginia E. Hall, MD, FACOG, FACP, and Mr. John B. Hall

Brenda Iliff

Daniel B. Kimball Jr., MD, FACP, and C. Eve J. Kimball, MD

Andrew Lutzkanin III, MD, and Kristen M. Lutzkanin, MD

Clifford H. Lyons, MD

Deborah K. Monko

Gwendolyn A. Poles, DO, FACP

Martin P. Raniowski, MA, CAE, FCPP

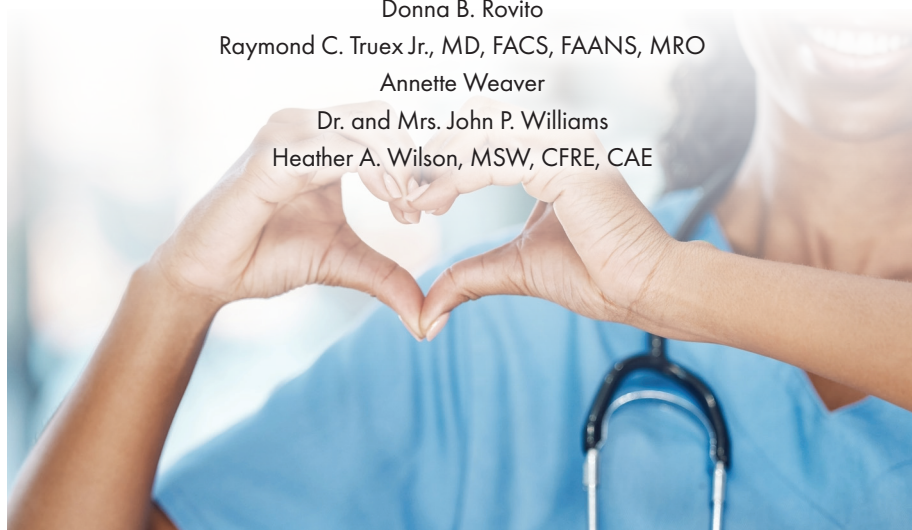
Donna B. Rovito

Raymond C. Truex Jr., MD, FACS, FAANS, MRO

Annette Weaver

Dr. and Mrs. John P. Williams

Heather A. Wilson, MSW, CFRE, CAE



We thank our volunteers and staff for their skill and leadership.

PA PHP ADVISORY COMMITTEE - 2024

Christopher J. Ware, MD – Chair
Laura Delliquadri, PAC – Vice-Chair
John Mellett, DMD – Secretary
Rebecca Borders, MD
David Girardi, DO
Suzanne Glossner, PA-C
Steven Heird, MD
Phillip Helmbright, DO
John Kriak, PharmD
Jacob Widroff, MD
William “Chris” Woodward, DO

NHP ADVISORY COMMITTEE – 2024

Jacqueline Buccilli, CRNA
Shane Moes, MA
Kathie Simpson, RN
Denise Vanacore Chase, PhD, ANP-BC, FNP-BC, PMHNP-BC
Tracey Ziegler, RN, BSN

PAMED CHARITABLE TRUST BOARD – 2024

Paul Dende, DO, FACP – Chair
Emily Beary, DO
William R. Dewar III, MD, FACP
Jason Woloski, MD

FINANCE COMMITTEE – 2024

William J. West Jr., MD
Paul F. Dende, DO, FACP
Virginia E. Hall, MD, FACOG, FACP (Ex-Officio)
William R. Dewar III, MD, FACP

FOUNDATION STAFF

Heather A. Wilson, MSW, CFRE, CAE

Executive Director

Tiffany M. Booher, MA, LPC, CAADC, CIP, CCSM

*Director, Peer Assistance Monitoring Programs
(PHP & NHP)*

Charles N. Burns Jr. MD, FASAM

Medical Director, (PHP & NHP)

Susan Caputo

Manager, Finance, Compliance & Scholarships

Shawna Crognale, MS, CAACD

Case Manager II, (NHP)

Michele Davis, CAADC, LPC

Case Manager, II (NHP)

Alexis Deimler, MBA

Assistant Case Manager, (PHP & NHP)

Melissa J. Devonshire, MBA, CADC, CCDP

Intake Coordinator, (NHP)

Alice Dunkin, BS, NAPT4

Case Manager, (NHP)

Debra Eshleman, AS

Assistant Case Manager, (PHP & NHP)

Kay Foltz, LSW, CADC, CCPG

Case Manager, (PHP)

Katie L. Gruber, MSW, CADC

Data and Training Manager, (PHP)

Julie Heaney

*Coordinator, Outreach, Education, &
Communications*

Sam Humphries, MSCMHC

Case Manager, II (NHP)

Amanda Irons-Bennett, LPC

Case Manager, II (NHP)

Edwin Kim, MD, MRO

Medical Director, (PHP & NHP)

Kelly Mlynek

Office Manager, (PHP & NHP)

Deborah K. Monko

Director, Student Financial Services

Melissa Poust, BSW

Case Manager I (NHP)

Jessica Reeder

Support Coordinator, LifeGuard® Program

Lori M. Storm

Manager, Philanthropy & Hospital Relations

Raymond C. Truex Jr. MD, FACS, FAANS, MRO

Medical Director, (PHP & NHP)

Annette M. Weaver

Senior Director, Finance & Operations

Norma Williard

Administrative Assistant

Charlotte D. Wilson-Manley

Donor Relations & Governance Administrator

Dana M. Youtz

Administrative Assistant, LifeGuard® Program

Tracey Ziegler, RN, BSN

Director, LifeGuard® Program





**We have made every effort to properly recognize our generous donors.
If we have made an error, we apologize.**

**Please contact us so we may correct our records. If your gift is made via a
donor-advised fund, please note that by the terms of the gift,
the fund name is recognized as the donor of record.**



The Foundation

of the Pennsylvania Medical Society

400 Winding Creek Blvd., Mechanicsburg, PA 17050-1885
(717) 558-7750 | www.foundationpamedsoc.org



The official registration and financial information of The Foundation of the Pennsylvania Medical Society may be obtained from the Pennsylvania Department of State by calling the toll-free number within Pennsylvania, 1-800-732-0999. Registration does not imply endorsement.