

# PAMED Election Nomination Form

**Name:**

Mobeena Arif

**City/Town:**

Lebanon

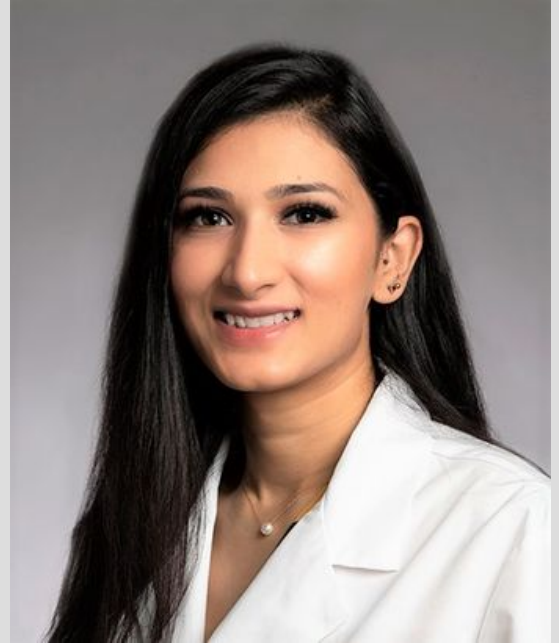
**What Position are you running for:**

Resident & Fellows Section - Member at Large (7 positions)

**Why should you be elected to this position**

Academic leadership has always been a sizeable passion of mine since undergrad and it continues to inspire me as I visualize my faculty members take on those roles daily. As I march in to PGY2, my goals is to focus on four domains of resident wellbeing :professional,physical,psychological, and social and hope to create larger impact.I would like to project my interest in the PAMED position to act as a liaison between residents,PDs, and policy makers by maintaining open communication channels.

**Would you like us to include a photo of you?**



**How long have you been a PAMED member?**

1 year

**Medical College:**

Windsor University School of Medicine

**Year Graduated:**

2017

**Board Certification**

PGY2

**Specialty:**

Family medicine

**County Medical Society**

**Current Positions**

N/A

**Former Positions**

N/A

## Pennsylvania Medical Society

### Current Positions

Resident member

### Former Positions

N/A

## American Medical Association

### Current Positions

Resident member

### Former Positions

Resident member at APPNA.

## Specialty Societies or Other Positions

### Current Positions

N/A

### Former Positions

N/A

### Other related activities

Medical student member at students for health where we ran free clinics for local population in St. Kitts, Caribbean. Took part in health mission in Guatemala as part of AAPNA organization.

### Are you a member of PAMPAC?

No

### Are you a member of any other Medical Association PAC's? (like AMPAC)

Yes

### Have you ever donated to The Foundation?

No



Pennsylvania  
MEDICAL SOCIETY®

ADVOCATE. EDUCATE. NAVIGATE.