

# PAMED Election Nomination Form

**Name:**

Lauren Kramer

**City/Town:**

Warminster

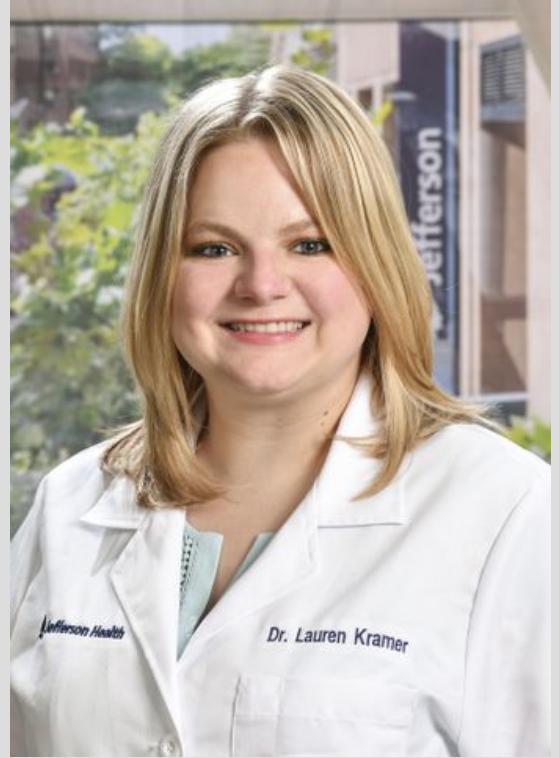
**What Position are you running for:**

Early Career Physician Section - Member at Large (2 positions)

**Why should you be elected to this position**

I have been involved with PAMED since medical school. I have served in multiple leadership roles over the years. Over the past 2 years, I have not had much of an active role in the society due to being overwhelmed with attending life. Realizing the importance of PAMED, I want to engage in a more active role for the future of medicine. I look forward to being a part of the ECPS in whatever capacity possible.

Would you like us to include a photo of you?



**How long have you been a PAMED member?**

10

**Medical College:**

Philadelphia College of Osteopathic Medicine

**Year Graduated:**

2015

**Board Certification**

Pending

**Specialty:**

Internal Medicine/Emergency Medicine

**County Medical Society**

**Current Positions**

None

**Former Positions**

None

## **Pennsylvania Medical Society**

### **Current Positions**

None

### **Former Positions**

MSS Vice Chair and Chair

MSS Alternate Delegate to the AMA

RFS Vice Chair and Chair

## **American Medical Association**

### **Current Positions**

None

### **Former Positions**

None

## **Specialty Societies or Other Positions**

### **Current Positions**

None

### **Former Positions**

None

### **Other related activities**

None

### **Are you a member of PAMPAC?**

Yes

### **Are you a member of any other Medical Association PAC's? (like AMPAC)**

No

### **Have you ever donated to The Foundation?**

No



Pennsylvania  
**MEDICAL SOCIETY**<sup>®</sup>

ADVOCATE. EDUCATE. NAVIGATE.